

West Area Planning Committee presentation

- 17/00913/FUL
- Oxford City Council - Erection of Visitor Centre comprising cafe/restaurant, tasting room and bar for distillery and public conveniences

127

www.oxford.gov.uk



Access from Cheney Lane



www.oxford.gov.uk



**OXFORD
CITY
COUNCIL**



The depot viewed from South Park



130

www.oxford.gov.uk



**OXFORD
CITY
COUNCIL**



The Threshing Barn



www.oxford.gov.uk



Curtilage Buildings



www.oxford.gov.uk



**OXFORD
CITY
COUNCIL**



View of Threshing Barn from within site



www.oxford.gov.uk



**OXFORD
CITY
COUNCIL**



View of Threshing Barn from South Park



134

www.oxford.gov.uk



**OXFORD
CITY
COUNCIL**



Existing site plan



135



Proposed site plan



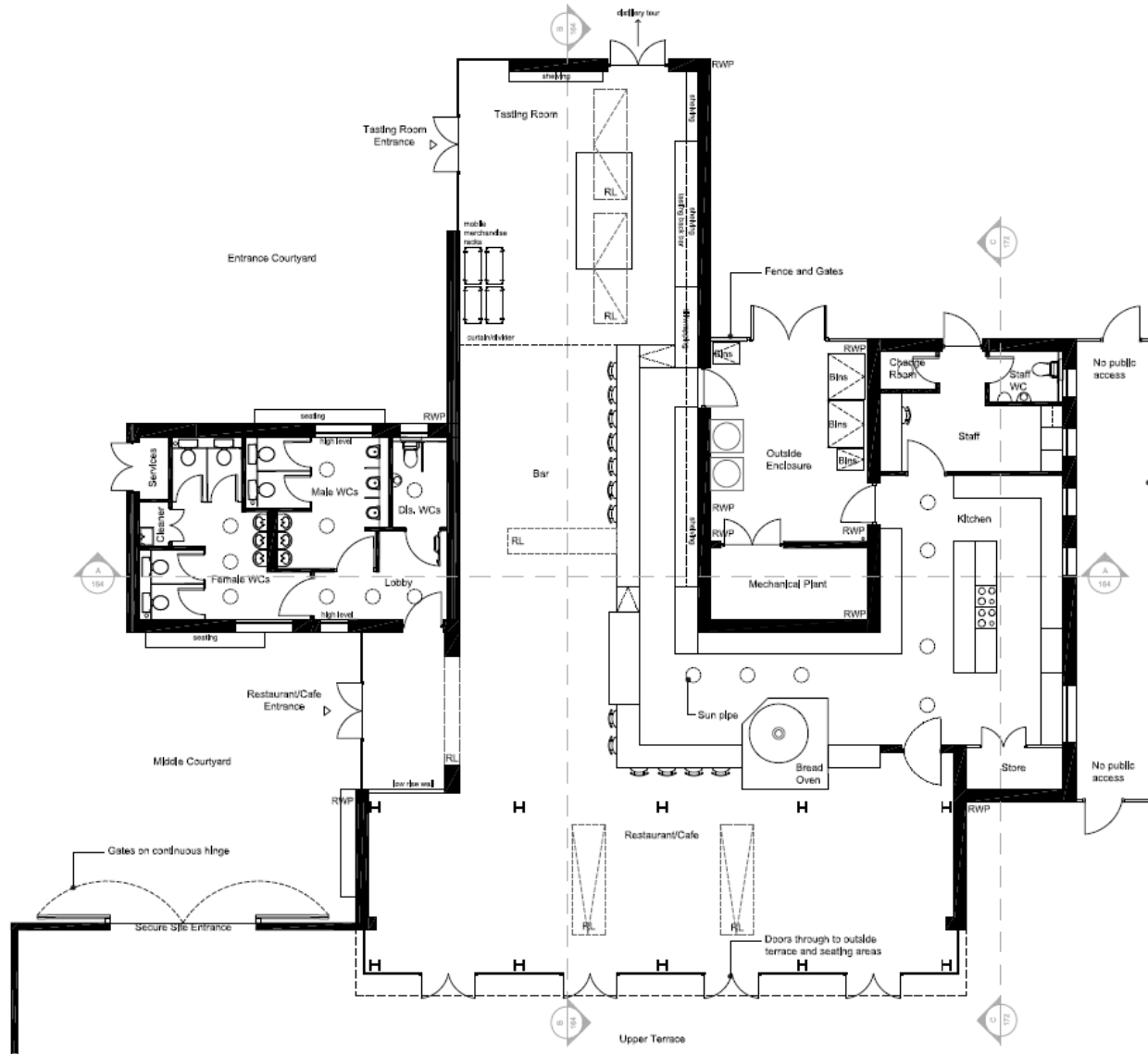
136

www.oxford.gov.uk

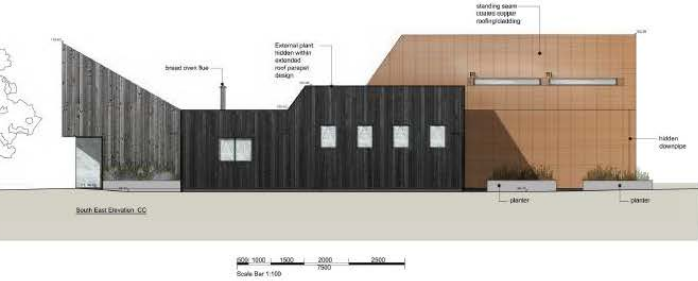
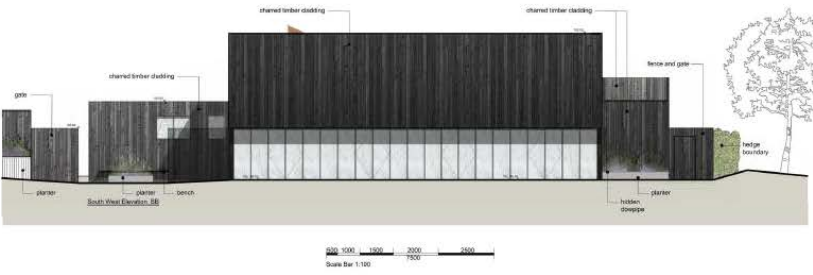
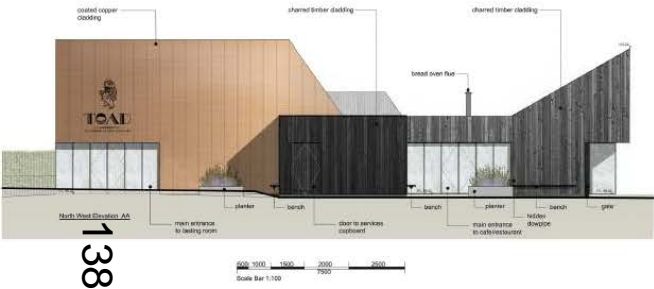


Proposed floor plans

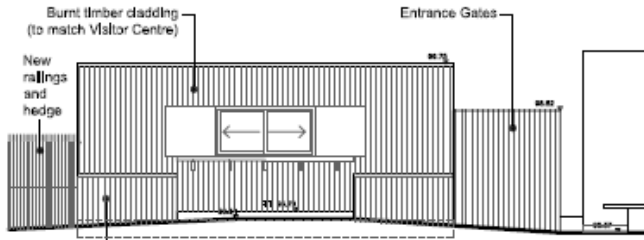
137



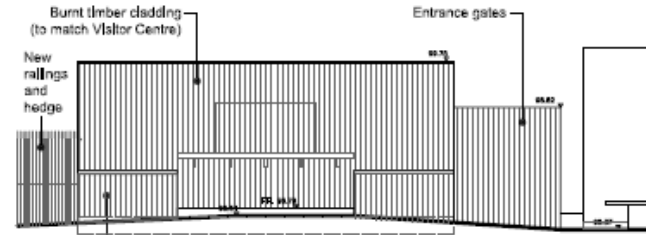
Proposed elevations



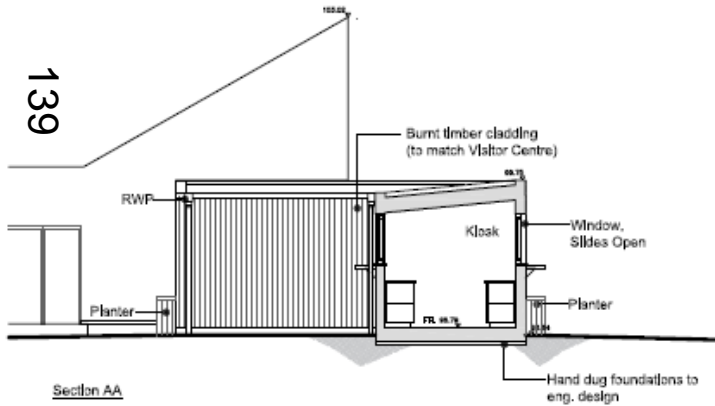
Proposed kiosk



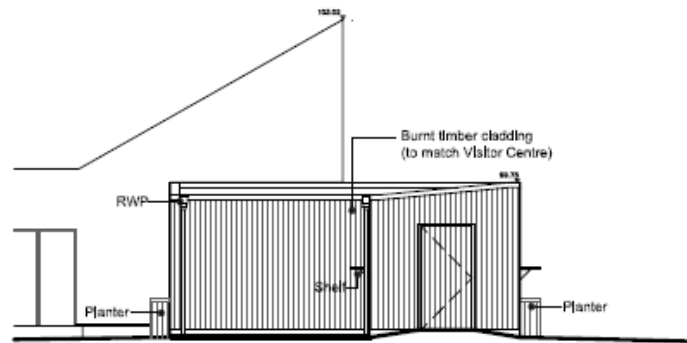
South West Elevation AA - Kiosk window shutters open



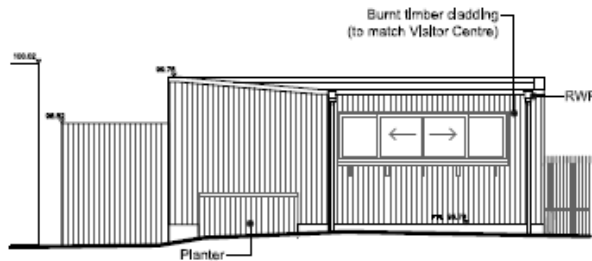
South West Elevation AA - Kiosk window shutters closed



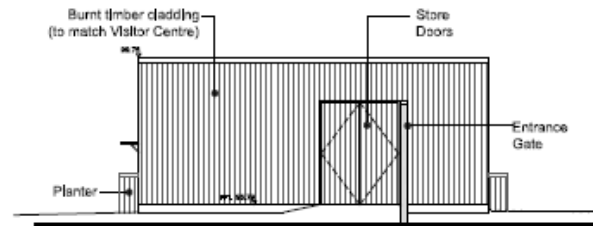
Section AA



North West Elevation BB



North East Elevation CC



South East Elevation DD



Proposed visuals



140

www.oxford.gov.uk

